



**VILLAGE GARDENS  
KATAMEYA**



**PHD**

**CHOOSE  
LIFE**

# **VILLAGE GARDENS KATAMEYA Apartments Offer**

**DELIVERY  
Starting JUNE 2014**



VILLAGE GARDENS  
KATAMEYA



PHD

CHOOSE  
LIFE

Village Gardens Katameya is a residential community sitting on 285,000 square meters in New Cairo only three-fifths of which is built up, providing for plenty of open spaces.

The development features modern stand alone villas, town houses and apartments and includes lushly landscaped gardens as well as a shopping strip catering to basic needs.



VILLAGE GARDENS  
KATAMEYA



PHD

CHOOSE  
LIFE

VGK  
location





VILLAGE GARDENS  
KATAMEYA



PHD

CHOOSE  
LIFE



# Exterior Design



# Apartment 163 m<sup>2</sup>

## About the Project

- Built on 285,600 Square Meters.
- 5 minutes away from AUC.
- Master planning, design and landscaping by Shehab Mazhar Architects.
- 80% landscaping.
- Clubhouse.
- A shopping strip catering to the residents basic needs.
- 5 minutes away from the Village Mall.
  - Housing over 100 local and international retail brands.
  - Cinema complex with 8 cinema screens.
  - An Array of recreational and entertainment venues.
- Parking areas.
- 24 hour security.
- Property management.

Total Built Up Area	163 m <sup>2</sup>
Reception	4.90m × 4.92m
Dining	4.77m × 5.00m
Kitchen	4.57m × 2.68m/3.92m
Bedroom 1	3.91m × 4.10m
Terrace	1.86m × 2.05m
Bedroom 2	3.82m × 4.10m
Terrace	3.67m × 1.99m
Bathroom	2.00m × 2.40m
Bathroom	3.32m × 1.65m

(41) Apartment Area 174 m <sup>2</sup>	(42) Duplex + Penthouse Area 246 m <sup>2</sup> Private Roof = 102m <sup>2</sup>	(43) Duplex + Penthouse Area 240 m <sup>2</sup> Private Roof = 100m <sup>2</sup>	(44) Apartment Area 173 m <sup>2</sup>
(31) Apartment Area 180 m <sup>2</sup>	(32) Apartment Area 163 m <sup>2</sup>	(33) Duplex + Penthouse Area 159 m <sup>2</sup>	(34) Apartment Area 180 m <sup>2</sup>
(21) Apartment Area 180 m <sup>2</sup>	(22) Apartment Area 163 m <sup>2</sup>	(23) Apartment Area 159 m <sup>2</sup>	(24) Apartment Area 180 m <sup>2</sup>
(01) Duplex 293 m <sup>2</sup> (Ground + First)	(11) Apartment Area 190 m <sup>2</sup>	(12) Apartment Area 191 m <sup>2</sup>	(04) Duplex 292 m <sup>2</sup> (Ground + First)
	(02) Apartment Area 211 m <sup>2</sup>	(03) Apartment Area 212 m <sup>2</sup>	



Apartment Floor Plan

# Apartment 163 m2 details

- Price: L.E. 637,000
- Garage (optional): L.E. 60,000
- Maintenance fees upon delivery: L.E. 29,000
- E-compound upon delivery: L.E. 7,500

# Apt. 163 m2 payment terms

## **Without Garage (L.E. 637,000)**

- 5% down payment  
**L.E. 31,850**
- 10% contract payment  
**L.E. 63,700**
- 85% installments over 6 years  
(24 quarterly installments)  
**L.E. 22,560**

*Maintenance: L.E. 29,000*  
*E-compound: L.E. 7,500*

## **With Garage (L.E. 697,000)**

- 5% down payment  
**L.E. 34,850**
- 10% contract payment  
**L.E. 69,700**
- 85% installments over 6 years  
(24 quarterly installments)  
**L.E. 24,685**

*Maintenance: L.E. 29,000*  
*E-compound: L.E. 7,500*



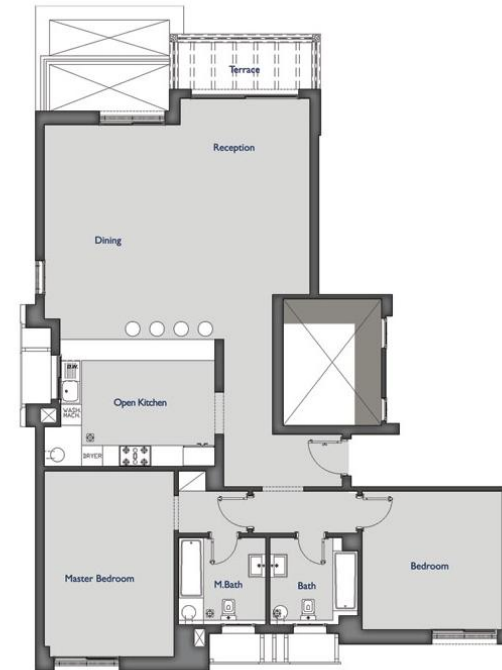
# Apartment 174 m<sup>2</sup>

## About the Project

- Built on 285,600 Square Meters.
- 5 minutes away from AUC.
- Master planning, design and landscaping by Shehab Mazhar Architects.
- 80% landscaping.
- Clubhouse.
- A shopping strip catering to the residents basic needs.
- 5 minutes away from the Village Mall.
  - Housing over 100 local and international retail brands.
  - Cinema complex with 8 cinema screens.
  - An Array of recreational and entertainment venues.
- Parking areas.
- 24 hour security.
- Property management.

Total Built Up Area	174 m <sup>2</sup>
Reception	3.70m x 5.59m
Terrace	3.80m x 1.33m
Dining	3.87m x 5.53m
Open Kitchen	4.41m x 3.62m
Master Bedroom	3.70m x 5.30m
Master Bathroom	2.49m x 2.48m
Bedroom	4.00m x 3.95m
Bathroom	2.50m x 2.48m

(41) Apartment Area 174 m <sup>2</sup>	(42) Duplex + Penthouse Area 246 m <sup>2</sup> Private Roof = 102m <sup>2</sup>	(43) Duplex + Penthouse Area 240 m <sup>2</sup> Private Roof = 100m <sup>2</sup>	(44) Apartment Area 173 m <sup>2</sup>
(31) Apartment Area 180 m <sup>2</sup>	(32) Apartment Area 163 m <sup>2</sup>	(33) Duplex + Penthouse Area 159 m <sup>2</sup>	(34) Apartment Area 180 m <sup>2</sup>
(21) Apartment Area 180 m <sup>2</sup>	(22) Apartment Area 163 m <sup>2</sup>	(23) Apartment Area 159 m <sup>2</sup>	(24) Apartment Area 180 m <sup>2</sup>
(01) Duplex 293 m <sup>2</sup> (Ground + First)	(11) Apartment Area 190 m <sup>2</sup>	(12) Apartment Area 191 m <sup>2</sup>	(04) Duplex 292 m <sup>2</sup> (Ground + First)
	(02) Apartment Area 211 m <sup>2</sup>	(03) Apartment Area 212 m <sup>2</sup>	



Apartment Floor Plan

# Apartment 174 m2 details

- Price: L.E. 698,000
- Garage (optional): L.E. 60,000
- Maintenance fees upon delivery: L.E. 31,000
- E-compound upon delivery: L.E. 7,500

# Apt.174 m2 payment terms

## **Without Garage (L.E. 698,000)**

- 5% down payment  
**L.E. 34,900**
- 10% contract payment  
**L.E. 69,800**
- 85% installments over 6 years  
(24 quarterly installments)  
**L.E. 24,720**

*Maintenance: L.E. 31,000*  
*E-compound: L.E. 7,500*

## **With Garage (L.E. 758,000)**

- 5% down payment  
**L.E. 37,900**
- 10% contract payment  
**L.E. 75,800**
- 85% installments over 6 years  
(24 quarterly installments)  
**L.E. 26,845**

*Maintenance: L.E. 31,000*  
*E-compound: L.E. 7,500*

# Construction Updates





VILLAGE GARDENS  
KATAMEYA



PHD

CHOOSE  
LIFE

Thank You